

HUBER+SUHNER FIBER OPTICS



Data sheet

GB Data sheet: Optical Distribution Rack ODR 600S

D Datenblatt: Optischer Hauptverteiler ODR 600S

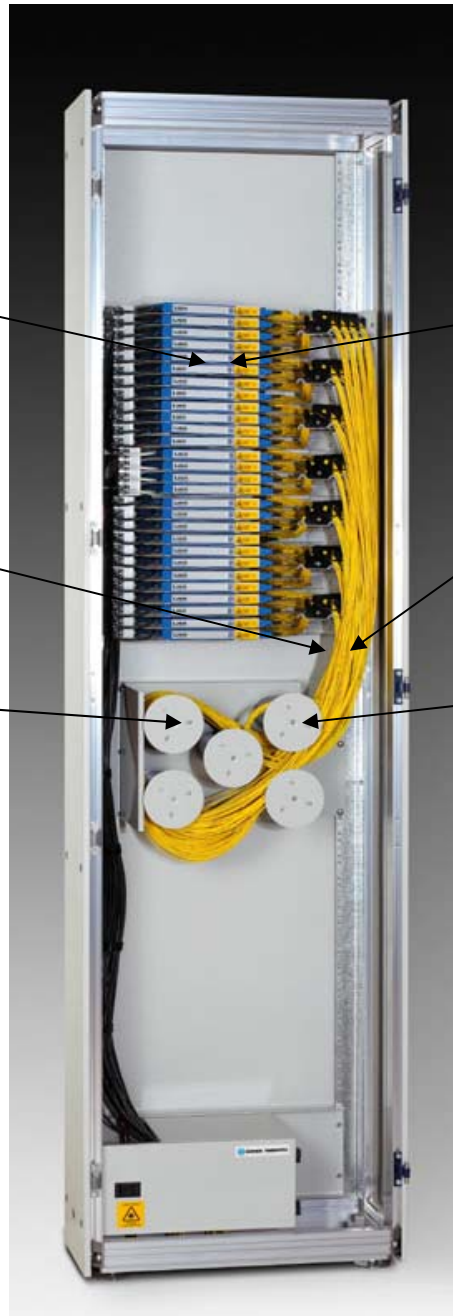
GB

Max. 40U for tray units without cross-connect unit (max. 80 fiber trays);
Max. 33U for tray units with cross-connect unit

Patchcord standard length for internal patching from line to system side: 4m;
recommended patchcord diameter: 2.0mm

Cross-connect unit

Max. Capacity with standard connectors:
960 fibers without cross-connect unit;
792 fibers with cross-connect unit



D

Max. 40HE für Trägereinheiten ohne Auskrenzfeld (max. 80 Spleisskassetten);
Max. 33HE Trägereinheiten mit Auskrenzfeld

Rangierkabelänge für Linie zu Systemseite: 4m;
empfohlener Rangierkabel-durchmesser: 2.0mm

Auskrenzfeld

Max. Kapazität mit Standard-verbinder:
960 Fasern ohne Auskrenzfeld;
792 Fasern mit Auskrenzfeld

WAIVER

While the information contained in this folder has been carefully compiled to the best of our present knowledge, it is not intended as representation or warranty of any kind on our part regarding the suitability of the products concerned for any particular use or purpose and neither shall any statement contained herein be construed as a recommendation to infringe any industrial property rights or as a license to use any such rights. The suitability of each product for any particular purpose must be checked beforehand with our specialists.

Document No.: 01.05.L509
Issued: 10.11.2004 / 4960
Checked/released: 23.11.2004 / 4573

Modification No.: a
Last amended:
Page 1 of 5



HUBER+SUHNER AG
Fiber Optics Division
CH-9100 Herisau
Phone +41 (0)71 353 41 11
Fax +41 (0)71 353 46 47
www.hubersuhner.com/lisa



GB

Features ODR 600S

- Low entry cost / grows with your network
- Fast deployment time
- Modular subunits offer complete customer configuration
- Separation of incoming and outgoing fiber, top or bottom cable entry
- High fiber density without compromising performance, reliability or handling
- Bending radius control throughout; 30mm for fibers and patchcords
- Intelligent variants for storing, routing and cross-connecting fiber optic patchcords
- Management of loose tubes and pre-terminated cables
- Fiber management with horizontal fiber trays
- Compatible with all LISA fiber trays
- Integration of standard and SFF connectors
- Interface to Lightpath ducting system
- Easy to install and maintain
- Removable door
- Supplied fully configured or flat-packed
- Highest fiber density per footprint
- Standardized rack dimensions (ETS)
- Rear-mounting of components for better access to fibers and cables
- Patchcord management with subunit, below or above the fiber trays

D

Leistungsmerkmale ODR 600S

- Geringe Eintrittskosten / wächst mit Ihrem Netzwerk
- Kurze Aufbauzeit
- Modulare Einheiten bieten komplette kundenspezifische Konfigurationen
- Trennung von ankommenden und abführenden Fasern, oben- oder liegender Kabeleingang
- Hohe Faserdichte ohne Verminderung von Leistung, Zuverlässigkeit und Handhabung
- Durchgehende Biegeradiusbegrenzung; 30mm für Fasern und Rangierkabel
- Intelligente Varianten zur Speicherung, Weitergabe und Verbindung von Rangierkabel
- Management von Bündeladerkabel und vorkonfektionierten Kabel
- Fasermanagement mit horizontalen Spleisskassetten
- Kompatibel mit allen Spleisskassetten
- Integration von Standard- und SFF-Verbinder
- Schnittstelle zu Kabelkanalsystem Lightpath
- Einfach zu installieren und warten
- Entfernbarer Tür
- Geliefert voll konfiguriert oder als Einzelteile
- Höchste Packungsdichte pro Standfläche
- Standardisierte Schrankabmessungen (ETS)
- Rückwärtige Befestigung für besseren Zugriff zu Fasern und Kabeln
- Rangierkabelmanagement mit Einheit, ober- oder unterhalb von Trägereinheiten

WAIVER

While the information contained in this folder has been carefully compiled to the best of our present knowledge, it is not intended as representation or warranty of any kind on our part regarding the suitability of the products concerned for any particular use or purpose and neither shall any statement contained herein be construed as a recommendation to infringe any industrial property rights or as a license to use any such rights. The suitability of each product for any particular purpose must be checked beforehand with our specialists.

Document No.: 01.05.L509
Issued: 10.11.2004 / 4960
Checked/released: 23.11.2004 / 4573

Modification No.: a
Last amended:
Page 2 of 5



HUBER+SUHNER AG
Fiber Optics Division
CH-9100 Herisau
Phone +41 (0)71 353 41 11
Fax +41 (0)71 353 46 47
www.hubersuhner.com/lisa

HUBER+SUHNER FIBER OPTICS



Data sheet



GB

Technical data	Value
Dimensions (WxDxH)	600 x 300 x 2200mm
Materials	Steel powder coated and aluminium
Weights Frame 600	42kg
Solid door 600	18kg
Top cover 600	2kg
Colors	pearl white (RAL 7035) and blue
Ordering code	See next pictures

D

Technische Daten	Wert
Dimensionen (BxTxH)	600 x 300 x 2200mm
Materials	Stahl pulverbeschichtet und Aluminium
Gewichte Grundgestell 600	42kg
Stahltüre 600	18kg
Dach 600	2kg
Farben	perlweiss (RAL 7035) und blau
Bestellcode	Siehe nächste Abbildungen

WAIVER

While the information contained in this folder has been carefully compiled to the best of our present knowledge, it is not intended as representation or warranty of any kind on our part regarding the suitability of the products concerned for any particular use or purpose and neither shall any statement contained herein be construed as a recommendation to infringe any industrial property rights or as a license to use any such rights. The suitability of each product for any particular purpose must be checked beforehand with our specialists.

Document No.: 01.05.L509
Issued: 10.11.2004 / 4960
Checked/released: 23.11.2004 / 4573

Modification No.: a
Last amended:
Page 3 of 5



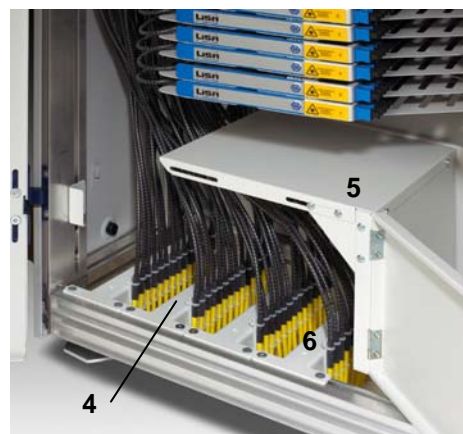
HUBER+SUHNER

HUBER+SUHNER AG
Fiber Optics Division
CH-9100 Herisau
Phone +41 (0)71 353 41 11
Fax +41 (0)71 353 46 47
www.hubersuhner.com/lisa

HUBER+SUHNER FIBER OPTICS



Data sheet



GB

Pos.	Description	Type (data sheet)	Part no.	Number for completely populated rack
1	Frame 600	ODR-FRAME-600X300X2200	84004730	1
2	Solid door 600	ODR-FD-SFS-600X2200	84004722	1
3	Top cover 600	ODR-TC-B-600X300	84004742	1
4	Breakout kit or breakout rail	(01.05.L503 or L507)		1 resp. 4
5	Breakout cover	(01.05.L506)		optional
6	Breakout tie plate	(01.05.L508)		1 up to 6 *
7	Cross-Connect unit	(01.05.L504)		1 *
8	Tray unit	(01.05.L502)		For max. 40U *
9	Fiber tray	(01.05.L501 or L505)		Max. 80 *

* depending on rack configuration

WAIVER

While the information contained in this folder has been carefully compiled to the best of our present knowledge, it is not intended as representation or warranty of any kind on our part regarding the suitability of the products concerned for any particular use or purpose and neither shall any statement contained herein be construed as a recommendation to infringe any industrial property rights or as a license to use any such rights. The suitability of each product for any particular purpose must be checked beforehand with our specialists.

Document No.: **01.05.L509**
 Issued: 10.11.2004 / 4960
 Checked/released: 23.11.2004 / 4573

Modification No.: a
 Last amended:
 Page 4 of 5



HUBER+SUHNER AG
 Fiber Optics Division
 CH-9100 Herisau
 Phone +41 (0)71 353 41 11
 Fax +41 (0)71 353 46 47
 www.hubersuhner.com/lisa

HUBER+SUHNER FIBER OPTICS



Data sheet



Pre-assembled rack (instead of Pos. 1, 2, 3)

Pos.	Description	Type	Part no.	Number for completely populated rack
1-3	Assembled rack	ODRB-SFS-B-A1	84005269	1

Accessories

Pos.	Description	Type	Part no.	Number for completely populated rack
	Fixing rack to raised floor	ODR-FFK-RF-1	84004337	1
	Fixing rack to concrete floor	ODR-FFK-SF-1	84004341	1

(D)

Pos.	Bezeichnung	Typ (Datenblatt)	Artikelnummer	Anzahl für komplett bestückten Schrank
1	Grundgestell 600	ODR-FRAME-600X300X2200	84004730	1
2	Stahltüre 600	ODR-FD-SFS-600X2200	84004722	1
3	Dach 600	ODR-TC-B-600X300	84004742	1
4	Anschluss-Set oder Montageschiene	(01.05.L503 oder L507)		1 resp. 4
5	Anschluss-Abdeckung	(01.05.L506)		optional
6	Haltekamm	(01.05.L508)		1 up to 6 *
7	Auskreuzfeld	(01.05.L504)		1 *
8	Trägereinheit	(01.05.L502)		für max. 40HE *
9	Spleisskassette	(01.05.L501 oder L505)		Max. 80 *

* abhängig von der Konfiguration

Vormontierter Verteiler (anstelle von Pos. 1, 2, 3)

Pos.	Bezeichnung	Typ	Artikelnummer	Anzahl für komplett bestückten Schrank
1-3	Vormontierter Hauptverteiler	ODRB-SFS-B-A1	84005269	1

Zubehör

Pos.	Bezeichnung	Typ	Artikelnummer	Anzahl für komplett bestückten Schrank
	Befestigung Schrank zu erhöhtem Boden	ODR-FFK-RF-1	84004337	1
	Befestigung Schrank zu Betonboden	ODR-FFK-SF-1	84004341	1

WAIVER

While the information contained in this folder has been carefully compiled to the best of our present knowledge, it is not intended as representation or warranty of any kind on our part regarding the suitability of the products concerned for any particular use or purpose and neither shall any statement contained herein be construed as a recommendation to infringe any industrial property rights or as a license to use any such rights. The suitability of each product for any particular purpose must be checked beforehand with our specialists.

Document No.: **01.05.L509** Modification No.: **a**
 Issued: **10.11.2004 / 4960** Last amended:
 Checked/released: **23.11.2004 / 4573** Page **5 of 5**



HUBER+SUHNER AG
 Fiber Optics Division
 CH-9100 Herisau
 Phone +41 (0)71 353 41 11
 Fax +41 (0)71 353 46 47
www.hubersuhner.com/lisa