

# Are there multiple people involved in your design process?

## Designing with Altium

### Industry fact.

Best-in-Class companies are 73% more likely than their competitors to maintain a single product definition with multiple views by role, directly attributing to 22% decrease in PCB development time over a two year time span with 90% of cost targets met.

*Aberdeen Group, 2011*

### Industry objective.

Good collaboration is critical to working efficiently and shortening development time. Whether it is from the manufacturing plant in Mumbai, to the design teams in Stuttgart and San Diego, and to the project director on holiday in the Greek islands, the geographically-dispersed 'Product Team' – collectively responsible for getting the product from idea to physical reality need to have shared (and controlled) access to view, discuss and utilize the data.

“By centralizing data, everyone in the company can work on the same model at the same time. I can have a design team in the states and one in China both working off the same data, and there is no time wasted wondering what version of the model each team is working on.”

*-Michael Hollen, Design Supervisor  
Manitowoc, Inc, Altium User*

### How this affects you.

49% of electronics manufacturers report change overs occurring several times in one day, managing that data across multiple (sometimes Global) locations. As modern organizations, we have outgrown traditional configuration management and production release management systems, including email. Collaboration across the entire design team and synchronization across distributed locations is the difference between Best-in-Class and Laggard companies.

### If...

You have ever:

- emailed files to anyone
- need to share your files with anyone in the organization
- missed development budgets
- missed launch dates
- spent time looking for shared data

### Then...

You need to synchronize design data across multiple location, using role based configuration management and product release tools.

### What if you could.

- Have access to over 100,000 and counting library?
- Seamlessly communication across every location of your organization?
- Eliminate errors due to data integrity issues?
- Guarantee you are working on the right version of every file?
- Reduce development time and cost by getting it right the first time!?

### What you can do.

Incorporate collaboration tools to synchronize the design data across distributed locations to improve product development efficiency. Best in class organizations who synchronize design data achieve:

- 90% of costs targets met
- 90% of products released on time
- 22% decrease in PCB development time over a two year cycle
- 89% of quality targets met at design release

## What it is?

A methodology that takes Altium Designer and Altium Vault Technology and essentially drives these two, in concert, and along with key design and management practices, to fuel a high-quality, high-yield design flow – empowering your design team to design with freedom in a highly-secure environment.

A methodology that provides the one true way to effectively and efficiently use Altium’s electronic design systems – the way they were intended to be used, the 'Director’s Cut' as it were.

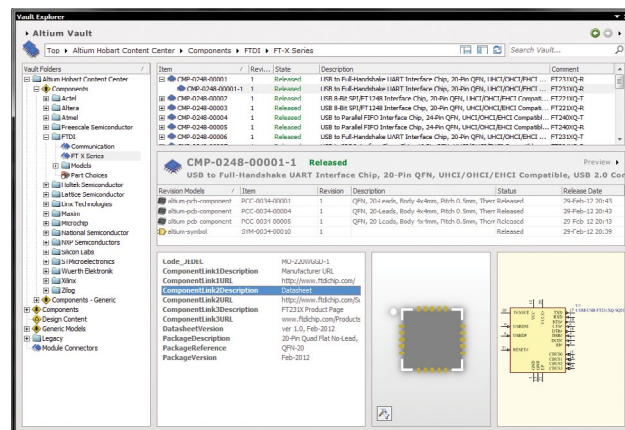
A methodology that streamlines the design process and enables new designers to enter the design field 'running with the ball'. [In a nutshell, a design methodology that, quite simply, works, and works remarkably well for true Data Management.]

## Effective collaboration for everyone.

Take full advantage of Altium Designer’s built in data management, version control support and advanced graphics system, practical and effective collaboration becomes a reality without the complexity and cost associated with antiquated systems.

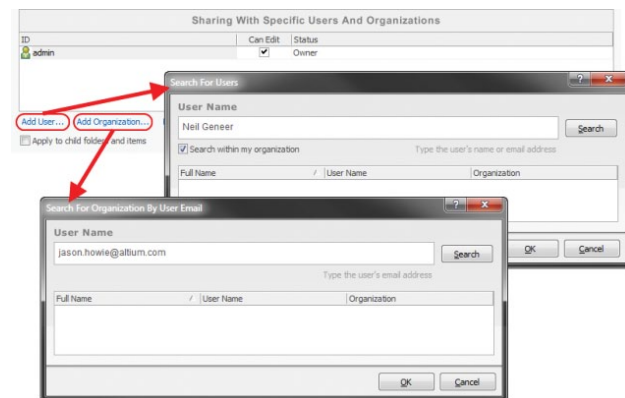
## Vault-Driven Electronics Design.

Providing an efficient means by which to handle such data in a highly secure, yet readily - accessible manner, Altium delivers a server-based engineering content management system solution - an Altium Vault Server.



## Role based centralization.

The ability to create defined zones of data items within a vault opens up the possibility of sharing design content based on roles and permissions.



## About Altium

Altium Limited (ASX:ALU) provides world-leading unified design solutions that break down the barriers to innovation, and help organisations easily harness the latest devices and technologies, to create their next generation of electronic products. Founded in 1985, Altium has headquarters in Shanghai, China, sales offices in the United States, Europe, Australia, and resellers in all other major markets.

For more information, please visit [www.altium.com](http://www.altium.com)

